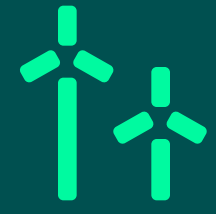


A 3D rendered graphic featuring the word 'Hiyield' in a bold, green, sans-serif font. The text is embossed onto a dark green, rectangular block that is part of a larger, multi-level geometric structure. The lighting creates soft shadows, giving the text and block a three-dimensional appearance.

Stowable Carbon & Emissions Report



Sustainability at Hiyield

Here at Hiyield, we're on a mission to make a positive difference for our planet. Our work might not result in something physical, but that doesn't mean it's without an environmental impact.

For every project we complete, we put together an estimated Carbon and Emissions Report for our clients. This report serves a few important purposes:

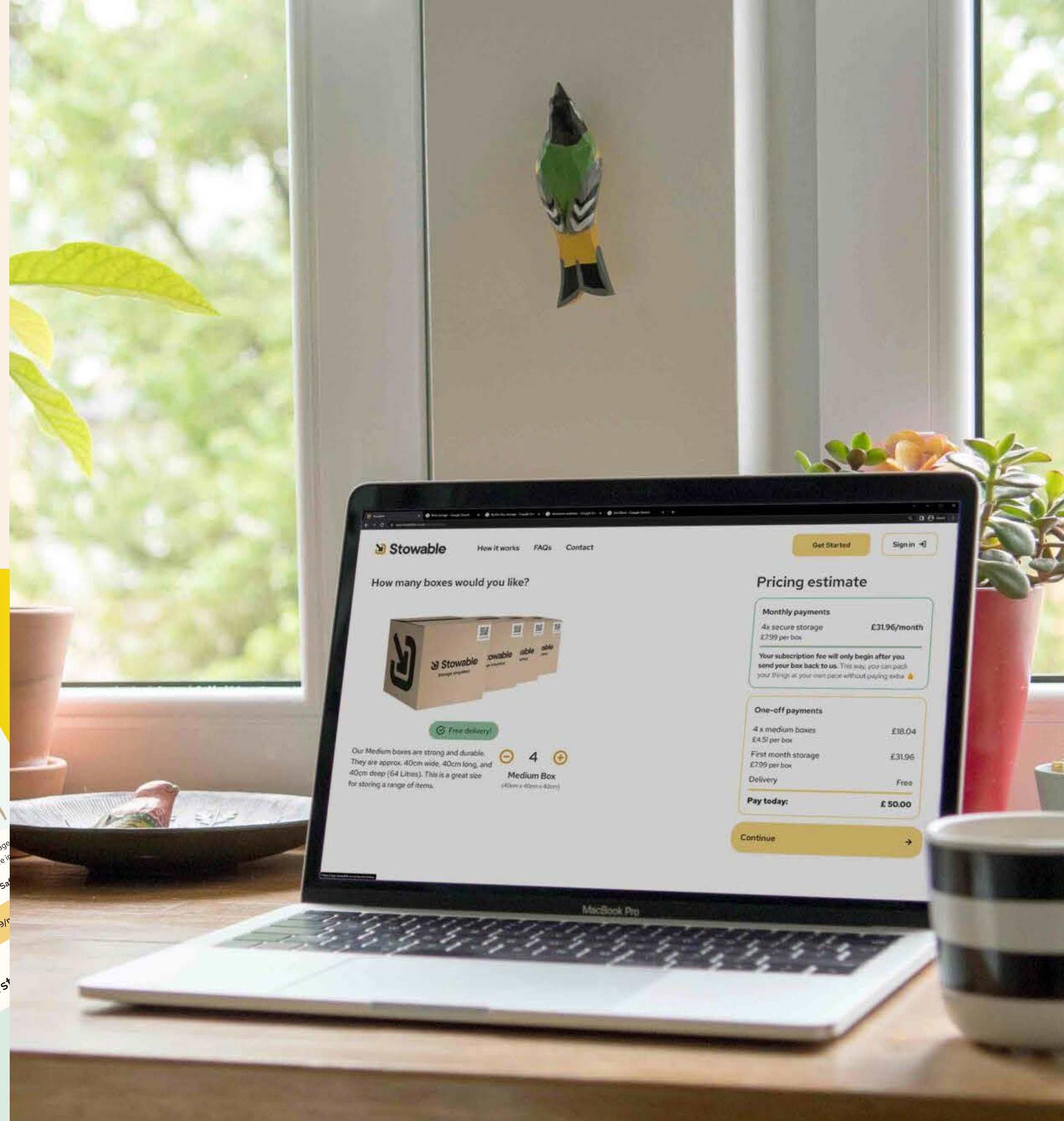
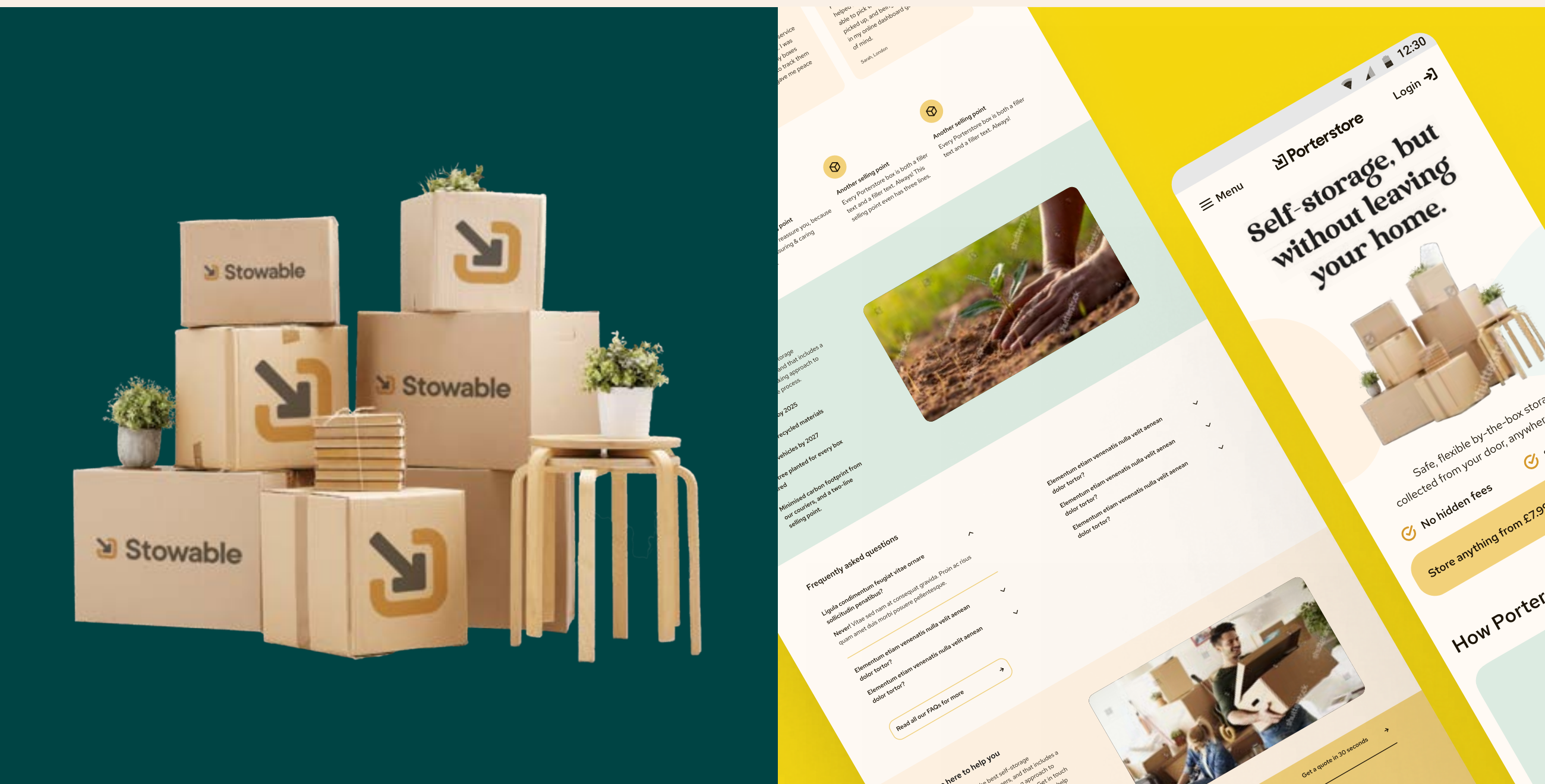
- It helps us understand and quantify the emissions we've generated in building your product.
- Our clients gain valuable insights into their own environmental footprint.
- It's a stepping stone towards collaborating on strategies to shrink our carbon footprint together.

At Hiyield, sustainability isn't just a buzzword - it's a commitment we're making for a greener future, and one we try to pass on to our clients.



Hiyield x Stowable

We collaborated to craft a cutting-edge website and web application, delivering a hassle-free self-storage solution



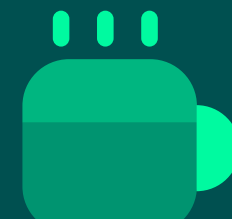
Carbon report

2.79 tonnes of CO2 were generated as part of this project *

This amount is equivalent to:



Driving 465km



Drinking 5,054 lattes

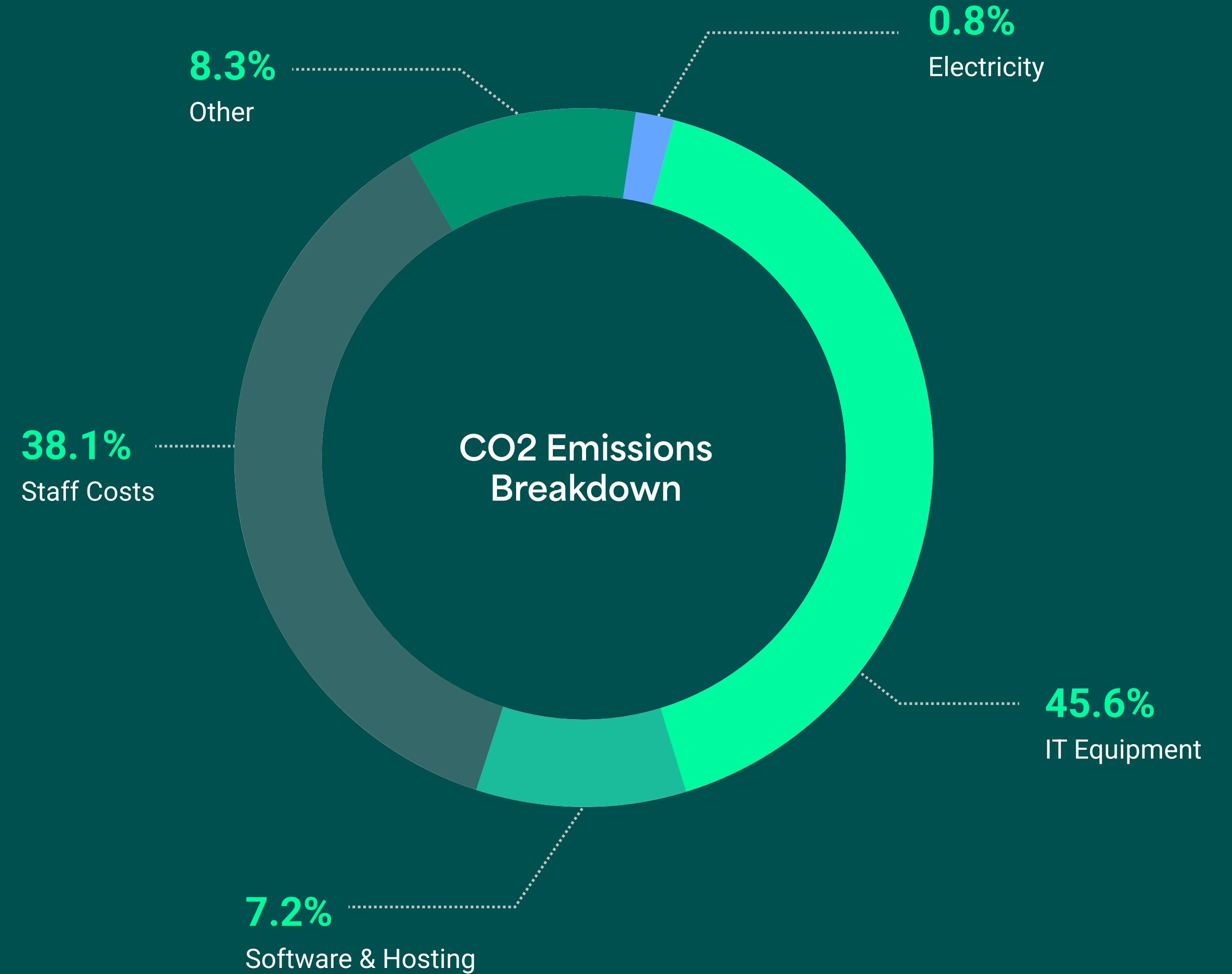


Flying from London to LA and back

* Data is based on the Hiyield Carbon Report 2021-22 and various intensity metrics. This report which uses the UK Government Greenhouse Gas Conversion Factors (June 2022), and the 2019 DEFRA Spend based Conversion Factors. The report was produced in partnership with the University of Exeter.

www.ghgprotocol.org recording methodology has been used throughout. Where exact figures have not been available, estimates have been used.

*CO2 production figures source: Book 'How Bad are Bananas? The Carbon Footprint of Everything.' Mike Berners Lee. Profile Books.



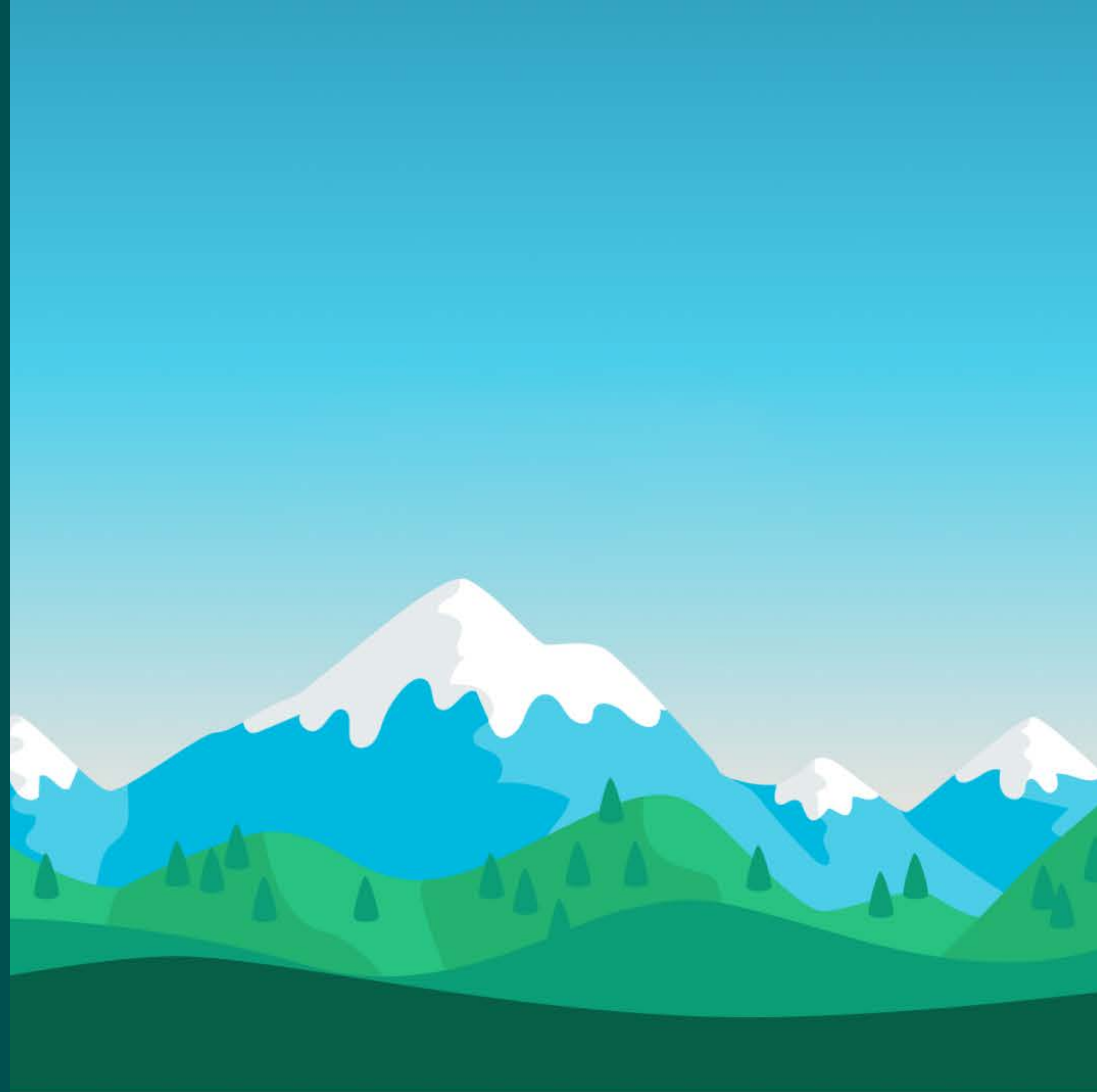
Transitioning to Green

Here's how we've minimised emissions in building your product:

- Used an 85% renewable energy powered hosting service
- Designed the product with sustainability in mind - quick load times make the site faster, but also reduce server resource consumption
- Efficient code and design
- Reduced overall data consumption
- Efficient architectures, serverless solutions, and robust caching mechanisms reduce the load and power consumption
- Modern algorithms, minified scripts, and optimised media assets (images/videos)

In addition, to further mitigate the impact of your product, we've offset 3 tonnes of CO₂e by planting 25 trees with Ecologi and contributing to 3 tonnes of offset through carbon avoidance projects.

[View Stowable's Carbon Offset →](#)



What else is Hiyield doing to make this number smaller?

- Transitioning all of our products to “green” hosting by choosing low emission data centres that are powered by renewable energy
- Implementing a more sustainable procurement policy - we buy refurbished equipment wherever possible, and work with our supply chain to help them reduce their own emissions
- Choosing office space with good public transport links to reduce vehicles on the road
- Moving to 100% renewable energy tariffs for our offices
- Further reducing the impact of road use by choosing remote working for the majority of our developers
- Offer a cycle to work scheme for those staff who do come to the office
- As well as these reduction strategies, we also offset our carbon emissions in partnership with Ecologi - so far we have funded the planting of 2,630 trees and avoided 186 tCO₂e.

